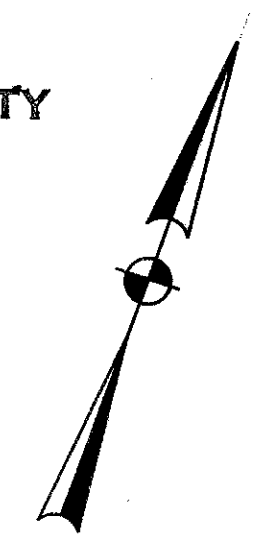
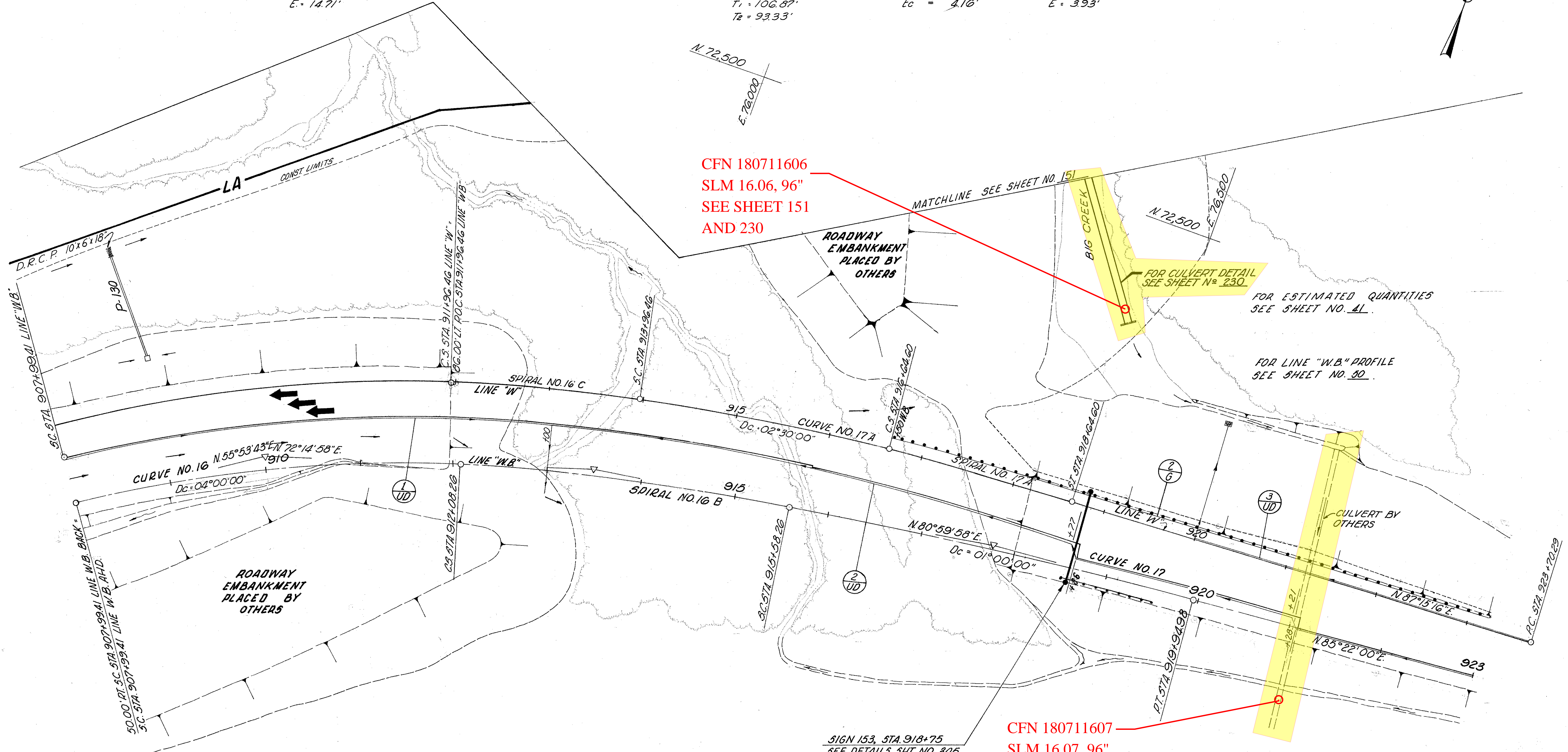


CUYAHOGA COUNTY  
CUY-71-15.06



CURVE NO. 16 P.I. STA 910+05.24 Δ = 16°21'15" D = 04°00'00" R = 1432.39' T = 205.83' L = 408.85' E = 14.71'	SPIRAL NO. 16 B Δ <sub>1</sub> = 01°45'00" Δ <sub>2</sub> = 07°00'00" D <sub>1</sub> = 01°00'00" D <sub>2</sub> = 04°00'00" R <sub>1</sub> = 5729.58' R <sub>2</sub> = 1432.39'	L <sub>s</sub> = 350.00' θ = 05°15'00" ρ = 2.67' L.T. = 210.35' S.T. = 140.33'	SPIRAL NO. 16 C L <sub>s</sub> = 200.00' Δ <sub>1</sub> & Δ <sub>2</sub> = 06°16'24" θ <sub>a</sub> = 01°16'24" ρ <sub>a</sub> = 0.37' D <sub>1</sub> = 02°30'00" D <sub>2</sub> = 03°46'24" T <sub>1</sub> = 106.87' T <sub>2</sub> = 93.33'	CURVE NO. 17 P.I. STA 917+76.63 Δ <sub>c</sub> = 04°22'02" D <sub>c</sub> = 01°00'00" R <sub>c</sub> = 5729.58' T <sub>c</sub> = 218.47' L <sub>c</sub> = 436.72' E <sub>c</sub> = 4.16'	CURVE NO. 17 A P.I. STA 915+30.69 Δ = 06°42'13" D = 02°30'00" R = 2291.83' T = 134.23' L = 268.14' E = 3.93'	SPIRAL NO. 17 A L <sub>s</sub> = 200.00' θ <sub>s</sub> = 02°30'00" ρ <sub>s</sub> = 0.73' K = 99.99' L.T. = 133.35' S.T. = 66.68'

DESCRIPTION	PLOTTED	INVEST	CHECKED
DATE	DATE	DATE	DATE
BY	BY	BY	BY
PAVEMENT	PAVEMENT	PAVEMENT	PAVEMENT
QUANTITIES	QUANTITIES	QUANTITIES	QUANTITIES
BY	BY	BY	BY



CFN 180711606  
SLM 16.06, 96"  
SEE SHEET 151  
AND 230

FOR CULVERT DETAIL  
SEE SHEET N° 230

FOR ESTIMATED QUANTITIES  
SEE SHEET NO. 41

FOR LINE "W.B." PROFILE  
SEE SHEET NO. 50

CFN 180711607  
SLM 16.07, 96"  
CONSTRUCTED  
UNDER CUY-71-14.16

BENCH MARK #47  
Spike in Telegraph Pole  
152' Rt of Sta. 910+08 "W.B."  
Elev. 672.06